

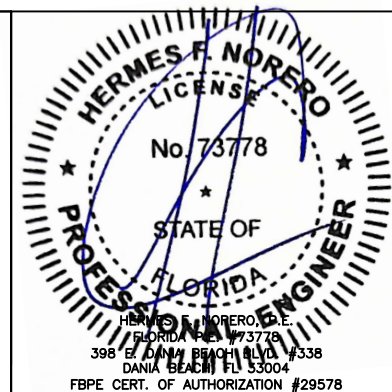
# RW-5000 RIBBON WINDOW SYSTEM LARGE & SMALL MISSILE IMPACT RESISTANT

## INDEX TO DRAWINGS

- SHEET 1: INDEX TO DRAWINGS AND NOTES
- SHEET 2: TYPICAL ELEVATION
- SHEET 3: BILL OF MATERIALS
- SHEET 4: TYPICAL HORIZONTAL GLAZING DETAILS
- SHEET 5: TYPICAL VERTICAL GLAZING DETAILS
- SHEET 6: MULL CAP INSTALLATION DETAILS
- SHEET 7: EXTRUSION PROFILES

## GENERAL NOTES

- 1) THIS WINDOW SYSTEM HAS BEEN TESTED, ENGINEERED AND APPROVED FOR DESIGN PRESSURES NOT TO EXCEED THOSE SHOWN IN LOAD CHARTS. SYSTEM CONFORMS TO THE CURRENT FLORIDA BUILDING CODE, INCLUDING HVHZ REGIONS.
- 2) ANCHORS SHALL BE AS LISTED, SPACED AS SHOWN ON DETAILS, ANCHOR EMBEDMENT TO BASE MATERIAL SHALL BE BEYOND WALL DRESSING OR STUCCO.
- 3) BUCK, OPENINGS & BUCK FASTENERS MUST BE DESIGNED & INSTALLED TO WITHSTAND WIND LOADS FOR EACH APPLICATION. WOOD BUCKS SHALL BE DESIGNED BY SPECIALTY ENGINEER OR ENGINEER OF RECORD.
- 4) THE SYSTEM SHOWN HEREIN WAS TESTED IN CONFORMANCE WITH TAS 201-94, 202-94, 203-94 AND AAMA 501-15.
- 5) A 33% INCREASE IN ALLOWABLE STRESS WAS NOT USED IN ANALYSIS.
- 6) ALL STEEL IN CONTACT WITH ALUMINUM TO BE PAINTED OR PLATED THE CURRENT CODE REFERENCED HEREIN.



REV	BY	DATE	DESCRIPTION
B	MS	03/09/23	8TH (2023) FBC UPDATE
A	NUS	06/04/20	2020 FBC UPDATE

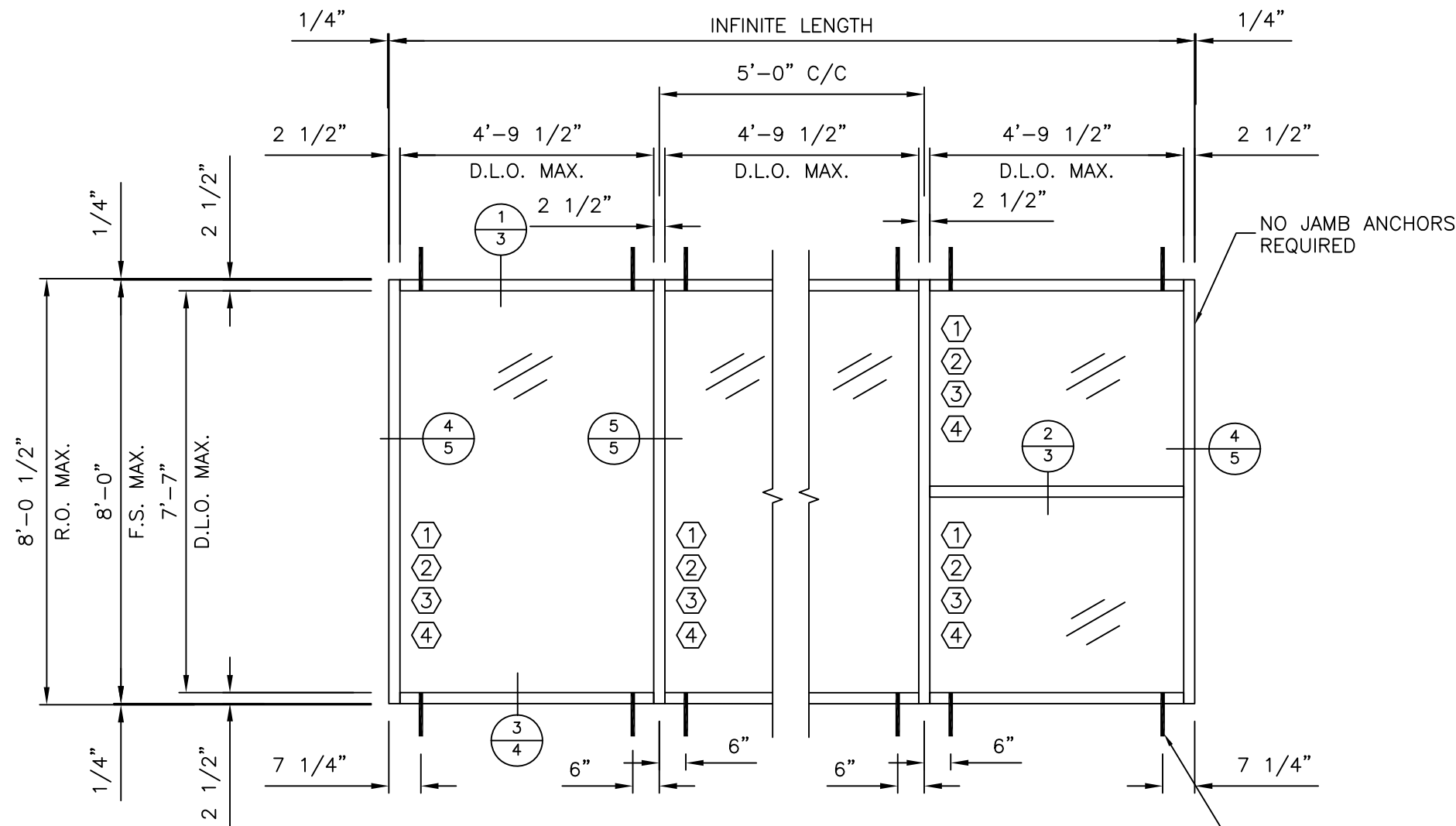
MANUAL COMP

**Oldcastle**  
**BuildingEnvelope™**  
803 AIRPORT RD. TERRELL TX 75160  
(972) 551-6100

PROJECT APPROVAL DRAWINGS  
RW-5000 RIBBON WINDOW SYSTEM

PROJECT NO.	
DRAWN	DATE
GRG	3/10/15
SCALE	NOTED
DRAWING NO.	RW-5000
SHEET	1 OF 7

OLDCASTLE BUILDINGENVELOPE SERIES RW-5000 RIBBON WINDOW SYSTEM



**MAX. DESIGN PRESSURES (P.S.F.) FOR VARIOUS GLASS TYPES**

GLASS WD. D.L.O.	GLASS HGT. D.L.O.	GLASS TYPES (MONOLITHIC LAMINATED)		
		①	②	③
42"	55"	+50, -58	+70, -80	+70, -80
45.5"		+50, -58	+70, -80	+70, -80
48"		N/A	+70, -80	+70, -80
52"			+70, -80	+70, -80
54"			+70, -80	+70, -80
57.5"			+70, -80	+70, -80
42"	91"	+70, -80	+70, -80	
45.5"		+70, -80	+70, -80	
48"		N/A	+70, -80	+70, -80
52"			+70, -80	+70, -80
54"			+70, -80	+70, -80
55.83"			+70, -80	+70, -80
57.5"	N/A	+70, -80		

(WATER TEST PRESSURE = 15 PSF)

**EXTERIOR ELEVATION**

SEE GLAZING DETAIL ON SHEET - 4

**GLASS SCHEDULE (LARGE MISSILE IMPACT)**

	MANUFACTURER	DESCRIPTION	GASKETS
①	EASTMAN CHEMICAL CO.	1/4" H.S. GLASS AT INNER AND OUTER FACES, .090 SAFLEX PVB	FG-5126 INT FG-5125 EXT
②	EASTMAN CHEMICAL CO.	1/4" H.S. GLASS AT INNER AND OUTER FACES, .075 SAFLEX CP INTERLAYER	FG-5126 INT FG-5125 EXT

**GLASS SCHEDULE (SMALL MISSILE IMPACT)**

	MANUFACTURER	DESCRIPTION	GASKETS
③	EASTMAN CHEMICAL CO.	1/4" H.S. GLASS AT INNER AND OUTER FACES .060 SAFLEX PVB. LAMINATE	FG-5126 INT FG-5125 EXT

TYPICAL ANCHOR LOCATIONS AT HEAD AND SILL OF ALL UNITS

REV	BY	DATE	DESCRIPTION
B	MS	03/09/23	8TH (2023) FBC UPDATE
A	NUS	08/04/20	2020 FBC UPDATE

**MANUAL COMP**

803 AIRPORT RD. TERRELL TX 75160  
(972) 551-6100

PROJECT APPROVAL DRAWINGS  
RW-5000 RIBBON WINDOW SYSTEM

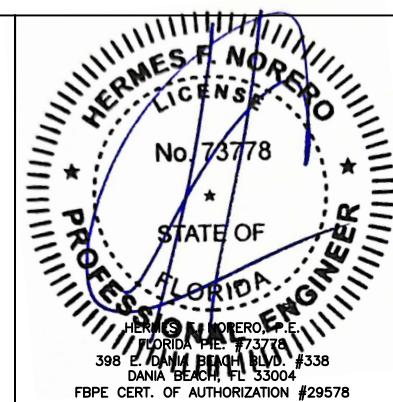
PROJECT NO. \_\_\_\_\_

DRAWN BY GRG DATE 3/10/15

SCALE NOTED

DRAWING NO. RW-5000

SHEET 2 OF 7



# RW-5000 RIBBON WINDOW SYSTEM

## BILL OF MATERIALS

COMPONENT SCHEDULE		
PART NO.	DESCRIPTION	ALUMINUM ALLOY & TEMPER
RW-5131	EXPANSION MULLION	6063-T6
RW-5132	EXPANSION MULLION	6063-T6
RW-5133	HEAD	6063-T6
RW-5134	GLAZING BEAD	6063-T6
RW-5135	HORIZONTAL TRIM	6063-T5
RW-5136	JAMB	6063-T6
RW-5137	HORIZONTAL	6063-T6
RW-5138	SILL	6063-T6
RW-5139	SETTING CHAIR X 4" LG	6063-T5
RW-5140	SILL FILLER	6063-T5
RW-5141	MULL. CAP	6063-T5
RW-5142	JAMB CAP	6063-T5
RW-5161	END DAM	6063-T5
RW-5162	MULL. CAP	6063-T5

GASKETS AND ACCESSORIES		
PART NO.	DESCRIPTION	LOCATION
CW-998	BULB GASKET	MULLION
FG-5125	EPDM GASKET	TYPICAL EXTERIOR
FG-5126	SSG SILICONE SPACER GASKET	TYPICAL INTERIOR
FG-5124	EPDM SETTING BLOCK (70-90 SHORE A DUROMETER)	SILL & HORIZONTAL
RW5000-FP-3	VINYL WATER DIVERTER	HORIZONTAL
FG-5128	VINYL BAFFLE RETAINER	SILL
RW5000-PP-4	BAFFLE	SILL
RW5000-FP-1	MULL. CAP (MADE FROM RW-5141)	HEAD & SILL OF MULLION
RW5000-FP-2	JAMB CAP (MADE FROM RW-5142)	HEAD & SILL OF JAMB
RW5000-FP-8	END DAM (MADE FROM RW-5161)	HEAD & SILL OF MULLION
RW5000-FP-11	MULL. CAP (MADE FROM RW-5162)	MULLION
DOWSIL 995	STRUCTURAL SILICONE	INTERIOR GLASS
TREMCO SPECTREM 2	STRUCTURAL SILICONE	INTERIOR GLASS
SM-5601	SEALANT TAPE	FRAME JOINTS
SM-7100	SEALANT	PERIMETER SEAL
DOWSIL 795	STRUCTURAL SILICONE	MULL. JOINT

FASTENER SCHEDULE		
PART NO.	DESCRIPTION	APPLICATION
FS-327	#12-14 X 7/8" HWH DRIL-FLEX GRADE 5 STEEL, GRADE 8 DRILL TIP	GLAZING BEAD
FS-202	#8 X 1/2" PPH	JAMB CAP
FS-45	#8 X 1/2" PFH	MULL. CAP/END DAM
FS-44	5/16" X 1" HHSTS	FRAME CONNECTIONS

SEE SHEET #4 FOR PERIMETER ANCHORS

NOTE:  
STRUCTURAL ALUMINUM TO BE 6063-T6,  
TRIM TO BE 6063-T5

		8TH (2023) FBC UPDATE	
		2020 FBC UPDATE	
			DESCRIPTION
	MS 03/09/23		DATE
	B	A	REV BY

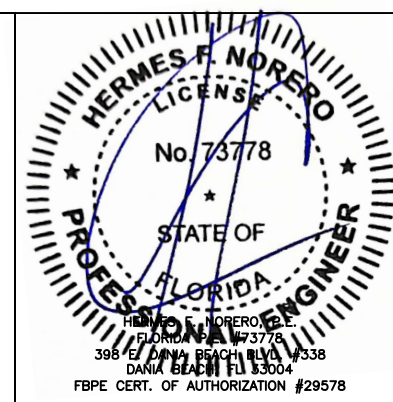
MANUAL COMP

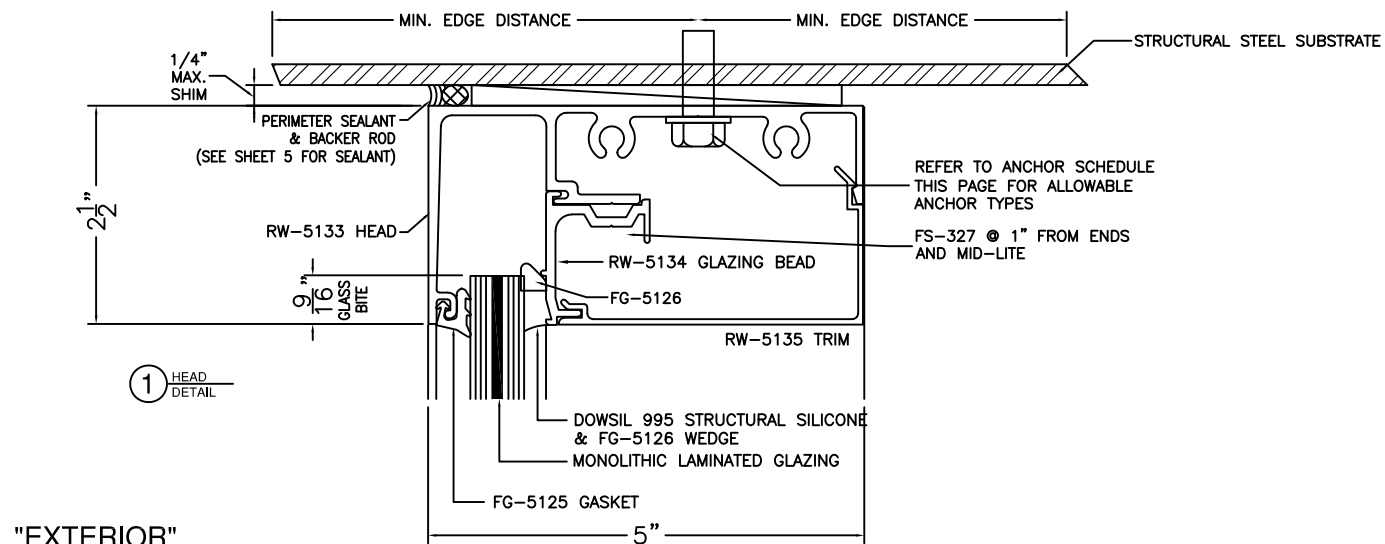


803 AIRPORT RD. TERRELL TX 75160  
(972) 551-6100

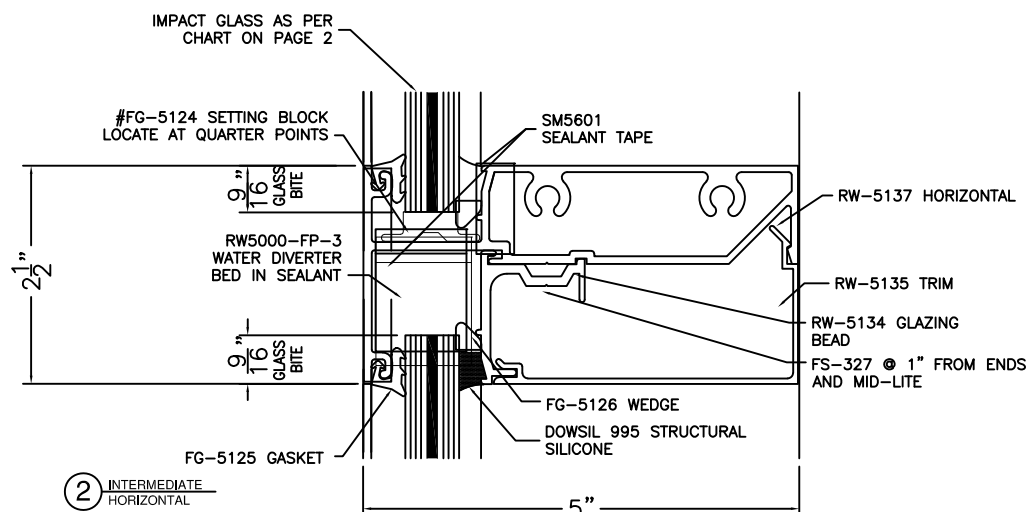
PROJECT APPROVAL DRAWINGS  
RW-5000 RIBBON WINDOW SYSTEM

PROJECT NO.	
DRAWN	DATE
GRG	3/10/15
SCALE	NOTED
DRAWING NO.	RW-5000
SHEET	3 OF 7

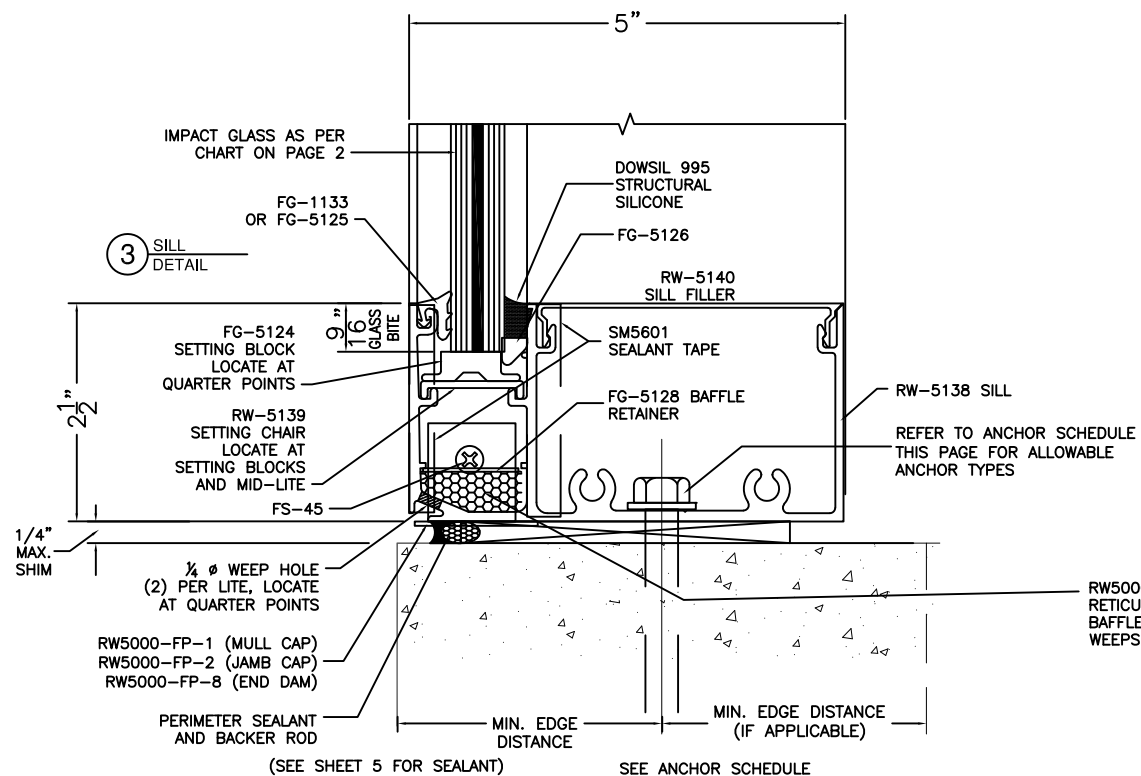




"EXTERIOR"

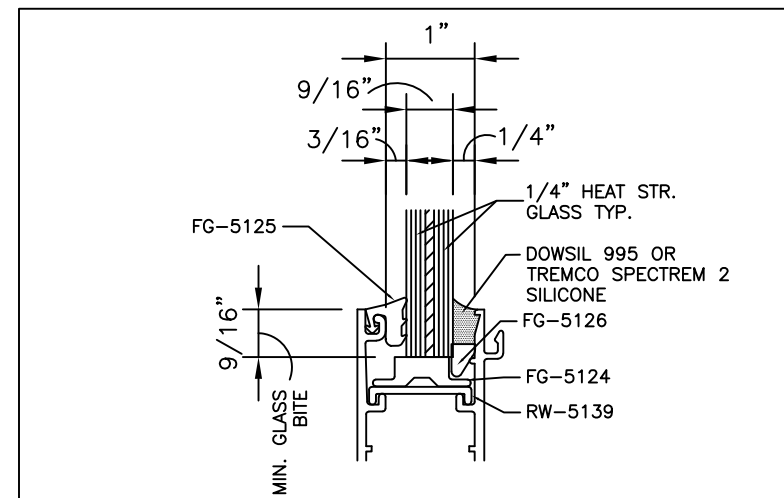


2 INTERMEDIATE HORIZONTAL



3 SILL DETAIL

GLAZING DETAIL



GLASS TYPES:

①②③

REFER TO GLASS SCHEDULE ON SHEET 2 FOR GLASS DESCRIPTION

ANCHOR SCHEDULE

IN UNCRACKED CONCRETE (MIN. f'c=3000 psi):

+ 3/8" HILTI KWIKBOLT III WITH 2-1/2" MIN. EMBED  
 MIN EDGE DISTANCE = 3"  
 MIN ANCHOR SPACING = 6"

+ 3/8" POWERS WEDGE BOLT WITH 2-1/2" MIN. EMBED  
 MIN EDGE DISTANCE = 3-1/8"  
 MIN ANCHOR SPACING = 6"

IN CRACKED CONCRETE (MIN. f'c=3000 psi):

+ 1/2" HILTI KWIKBOLT TZ CS WITH 3-5/8" MIN. EMBED  
 MIN EDGE DISTANCE = 3-3/8"  
 MIN ANCHOR SPACING = 6"

+ 1/2" POWERS WEDGE BOLT WITH 3-1/2" MIN. EMBED  
 MIN EDGE DISTANCE = 3-1/2"  
 MIN ANCHOR SPACING = 6"

IN STEEL (1/8" THICK, A36 OR EQUIVALENT)

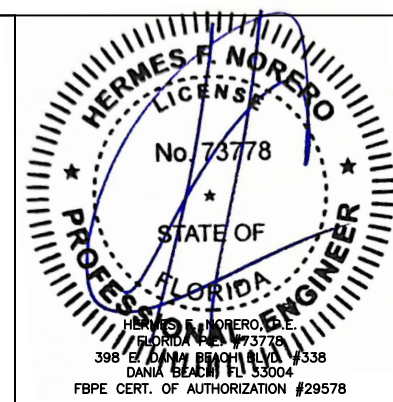
+ 3/8"-16 GRADE-5 HEX HEAD BOLT WITH NUT & WASHER OR SELF-TAPPING SCREW OR DRILLED AND TAPPED HOLES  
 MIN. FULL ENGAGEMENT INTO HEX NUT OR MIN 3 THREADS PENETRATION FOR SELF-TAPPING SCREWS OR DRILLED AND TAPPED BOLTS  
 MIN EDGE DISTANCE = 1"

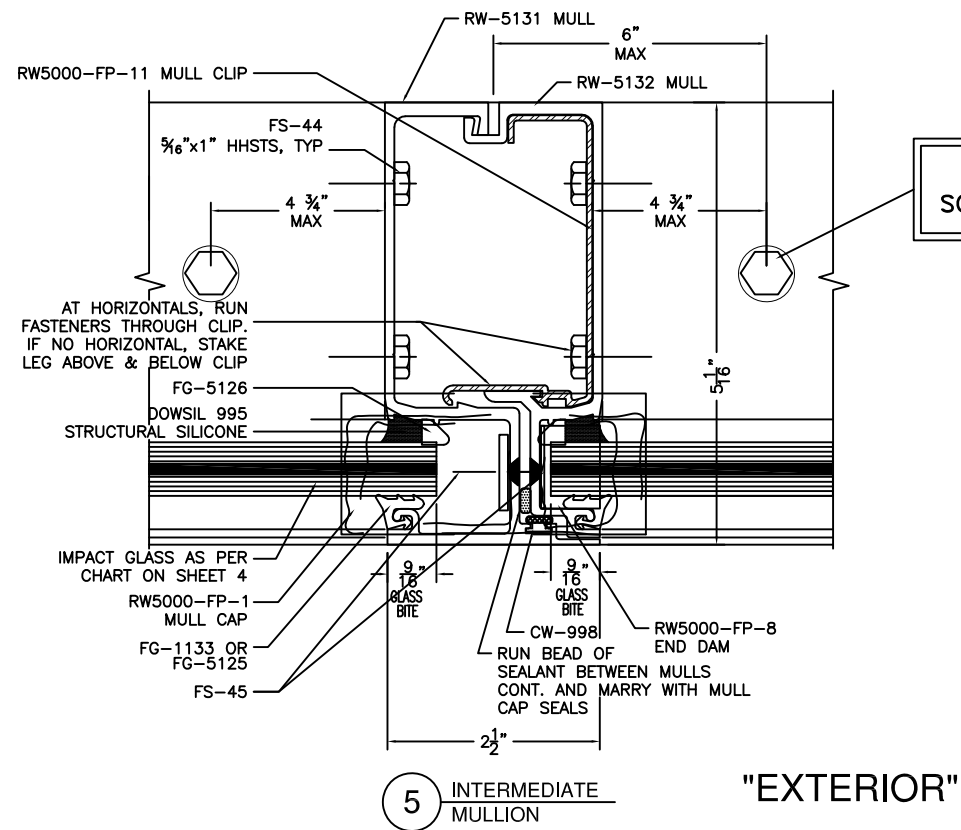
PROJECT	8TH (2023) FBC UPDATE	DESCRIPTION
REV	DATE	
B	MS 03/09/23	
A	NUS 06/04/20	
MANUAL COMP		

**Oldcastle BuildingEnvelope™**

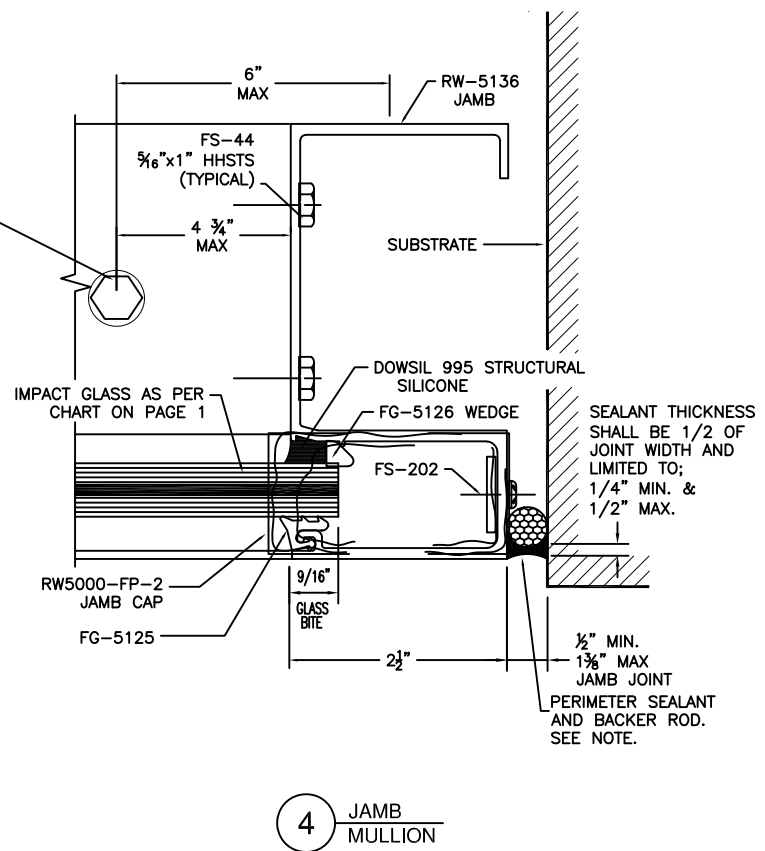
803 AIRPORT RD. TERRELL TX 75160  
(972) 551-6100

PROJECT APPROVAL DRAWINGS RW-5000 RIBBON WINDOW SYSTEM	
PROJECT	PROJECT NO.
DRAWN	DATE
GRG	3/10/15
SCALE	NOTED
DRAWING NO.	RW-5000
SHEET	4 OF 7





ANCHOR PER ANCHOR SCHEDULE ON SHEET #4



GLAZING NOTE:  
REFERENCE SHEET 2 FOR GLASS SCHEDULE, AND SHEET 4 FOR GLAZING DETAIL

SEE SHEET 6 FOR ADDITIONAL MULL CAP INSTALLATION INFORMATION

JAMB SEALANT NOTES:

PERIMETER SEALANT OPTIONS:  
DOWSIL 795 (SILICONE),  
TREMCO SPECTREM 2 & 3 (SILICONE)  
TREMCO DYMONIC FC (URETHANE)  
SONNEBORN SOLOLASTIC 150 (ELASTOMERIC)

ALTERNATE SEALANTS & ALTERNATE JAMB GAPS:  
TO BE APPROVED BY DESIGN PROFESSIONAL OF RECORD AND SEALANT MANUFACTURER.

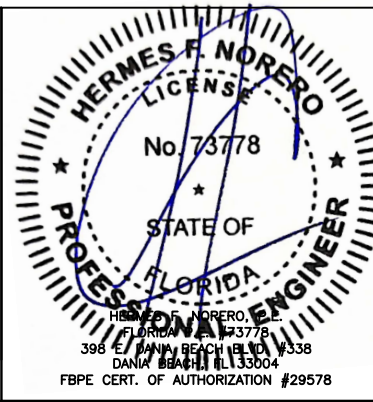
PROJECT	8TH (2023) FBC UPDATE
REV	DATE
B	MS 03/09/23
A	NUS08/04/20
REV BY	DESCRIPTION

**Oldcastle BuildingEnvelope™**

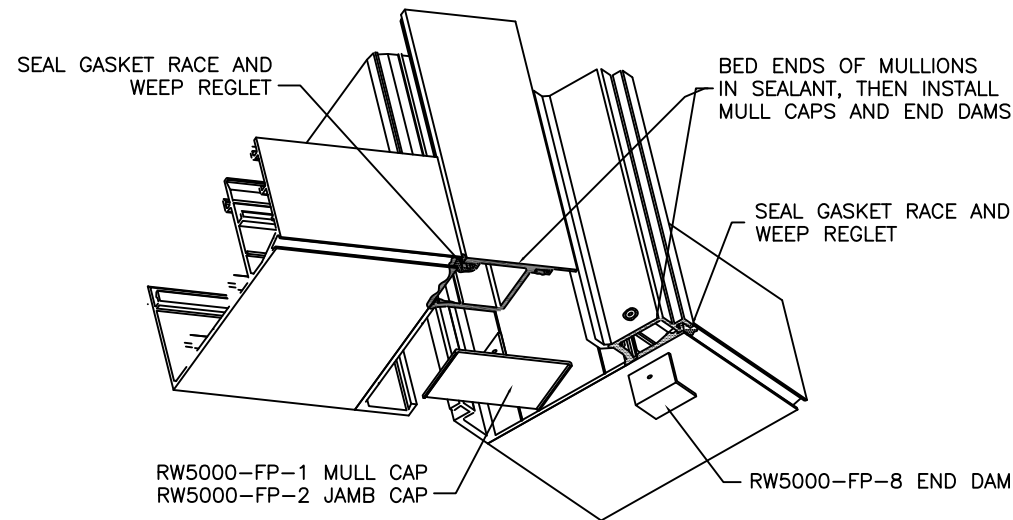
803 AIRPORT RD. TERRELL TX 75160  
(972) 551-6100

PROJECT APPROVAL DRAWINGS  
RW-5000 RIBBON WINDOW SYSTEM

PROJECT NO.	
DRAWN	DATE
GRG	3/10/15
SCALE	NOTED
DRAWING NO.	RW-5000
SHEET	5 OF 7



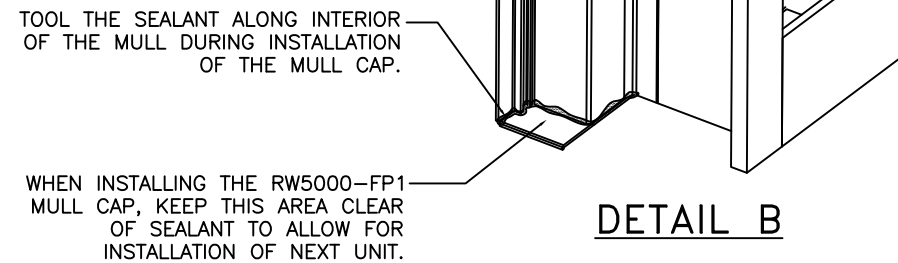
# RW-5000 MULL CAP SEALANT DETAILS AND INSTALLATION INSTRUCTIONS



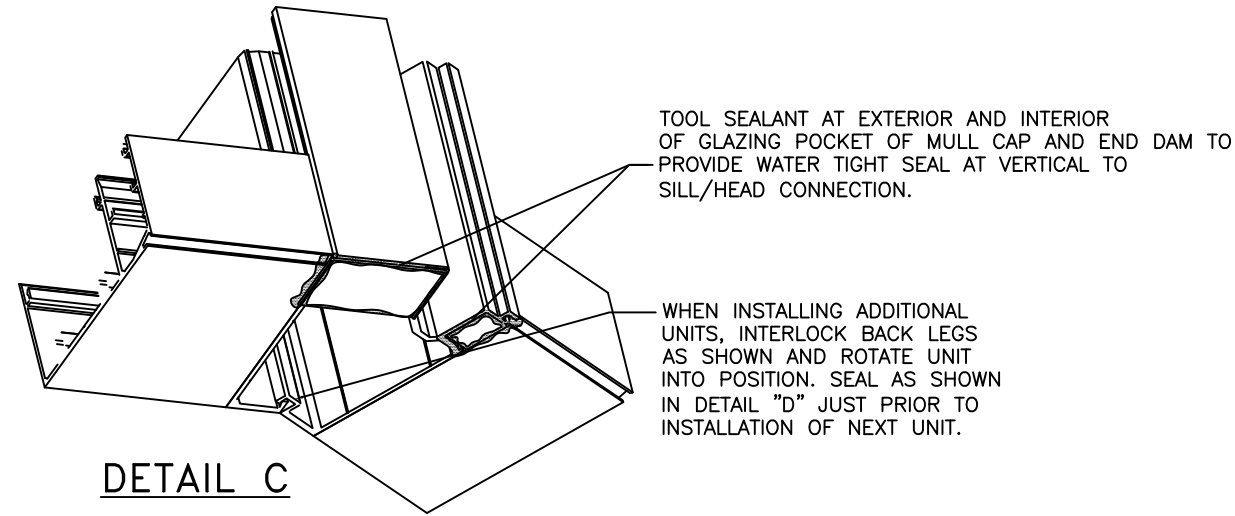
**DETAIL A**

MULL CAP AND END DAM REQUIRED AT HEAD AND SILL TYPICAL. (SILL SHOWN)

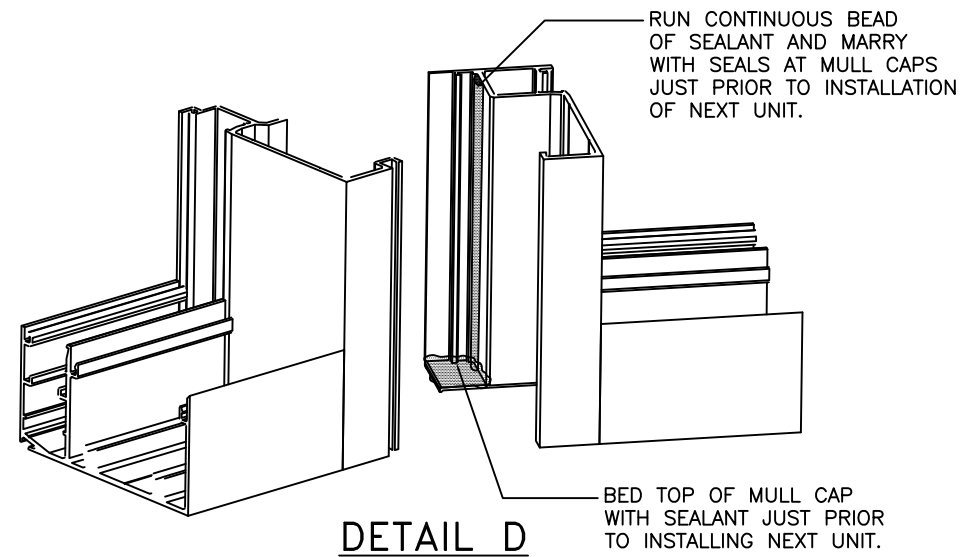
INSTALL MULL CAPS AND END DAMS USING FS-45 (#8 X 1/2" PFH), INSTALL JAMB CAPS USING FS-202 (#8 X 1/2" PPH). (CAP SEAL ALL FASTENERS)



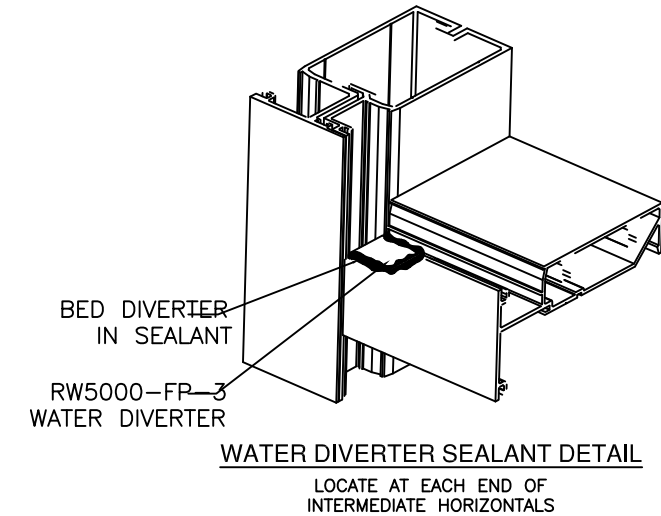
**DETAIL B**



**DETAIL C**



**DETAIL D**



**WATER DIVERTER SEALANT DETAIL**

**INSTALLATION NOTES:**

- 1) ASSEMBLE UNITS AS SHOWN ON DETAIL SHEETS 3 THRU 5. INSTALL SEALANT TAPE BETWEEN VERTICALS AND HORIZONTALS AS SHOWN.
- 2) INSTALL AND SEAL MULL CAPS AS SHOWN IN DETAILS A, B & C ABOVE.
- 3) MULL CAPS SHOULD FORM A WATER TIGHT SEAL. A TEST MAY BE CONDUCTED TO CONFIRM THIS SEAL BY BLOCKING WEEP HOLES AND FILLING SILL CAVITY WITH WATER. AFTER TEST REMOVE PLUGS FROM WEEP HOLES, DRAIN WATER, INSTALL BAFFLES AND BAFFLE RETAINERS.
- 4) INSTALL FIRST UNIT INTO OPENING (UNITS WILL INSTALL FROM LEFT TO RIGHT AS VIEWED FROM EXTERIOR OF BUILDING), LEVEL, PLUMB AND ANCHOR FIRST UNIT. WHEN SHIMMING UNITS, SHIM AT ANCHOR POINTS UNDER SILL. DO NOT PLACE SHIMS BENEATH MULL OR MULL CAP.

- 5) RUN BEAD OF SEALANT CONTINUOUS FOR FULL HEIGHT OF MULLION AND BED MULL CAP WITH SEALANT AT HEAD AND SILL AS SHOWN IN DETAIL D.
- 6) INSTALL SECOND UNIT BY BRINGING INTO POSITION FROM INSIDE OF BUILDING, TILT HEAD OF UNIT BENEATH MULL CAP, ROTATE SILL OF UNIT OVER LOWER MULL CAP, THEN INTERLOCK BACK LEGS OF MULLION (SEE DETAIL C), PLACE APPROPRIATE SHIMS BENEATH SILL MEMBER TO ALLOW FOR BETTER ALIGNMENT, AND ROTATE UNIT INTO PLACE. PLUMB AND ANCHOR.
- 7) REPEAT STEP 6 FOR ALL ADDITIONAL UNITS. MINIMUM 1/4" CAULK JOINT AT JAMB IS REQUIRED FOR INSTALLATION OF FINAL UNIT.

- 8) SYSTEM MAY BE INSTALLED EITHER IN UN-GLAZED OR PREGLAZED FRAMES. WHEN INSTALLING UNITS AS UN-GLAZED FRAMES FOLLOW INSTRUCTIONS 4 THRU 8 AND THEN INSTALL GLASS, NEXT PLACE AN 1/8" SHIM AT MID-HEIGHT OF MULL AND CLAMP BACK OF MULL AT THE SHIM BEFORE RUNNING WEDGE TO HELP INSURE PROPER ALIGNMENT OF MULLS AT FACE OF SYSTEM. WHEN PREGLAZING FRAMES, MAKE SURE THAT UNITS ARE SQUARE AND THAT DAY LIGHT OPENINGS ARE HELD TO PROPER DIMENSIONS BEFORE RUNNING STRUCTURAL SILICONE. (REFERENCE SILICONE MANUFACTURER FOR PROPER CLEANING AND USE OF SILICONE.)

		8TH (2023) FBC UPDATE	
B	MS 03/09/23		DATE
A	NUS08/04/20	2020 FBC UPDATE	DESCRIPTION
REV BY			

**MANUAL COMP**

803 AIRPORT RD. TERRELL TX 75160  
(972) 551-6100

**PROJECT APPROVAL DRAWINGS**  
**RW-5000 RIBBON WINDOW SYSTEM**

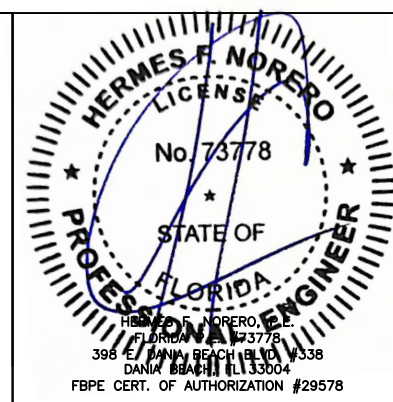
PROJECT NO. \_\_\_\_\_

DRAWN	DATE
GRG	3/10/15

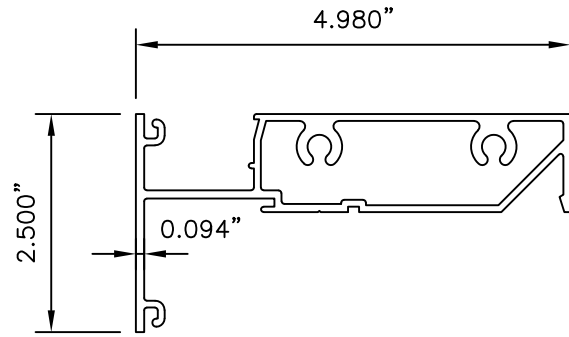
SCALE: NOTED

DRAWING NO. RW-5000

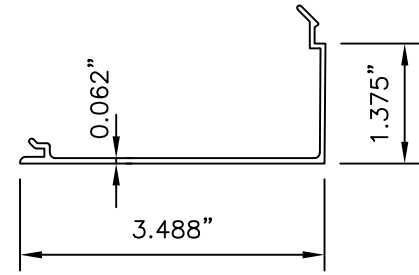
SHEET 6 OF 7



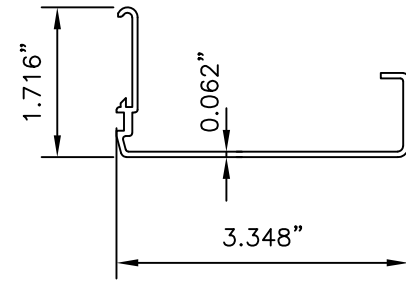
# RW-5000 EXTRUSION PROFILES



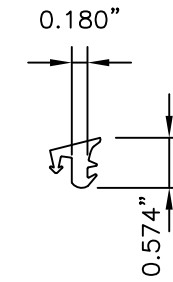
RW-5137 HORIZONTAL



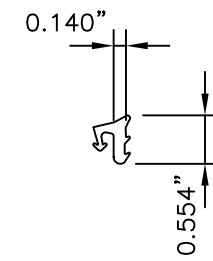
RW-5135 TRIM



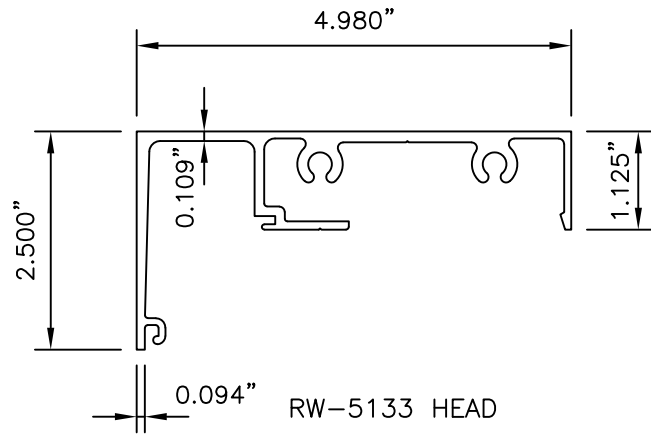
RW5000-FP-11 MULL CLIP



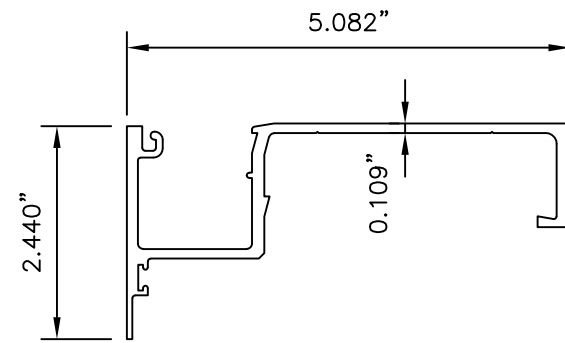
FG-5125 GASKET



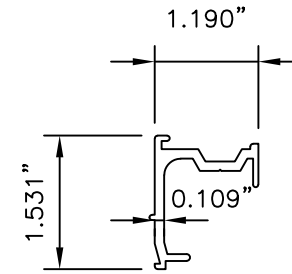
FG-1133 GASKET



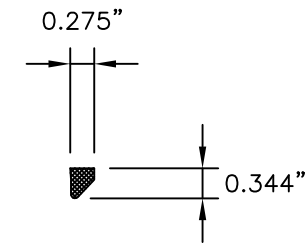
RW-5133 HEAD



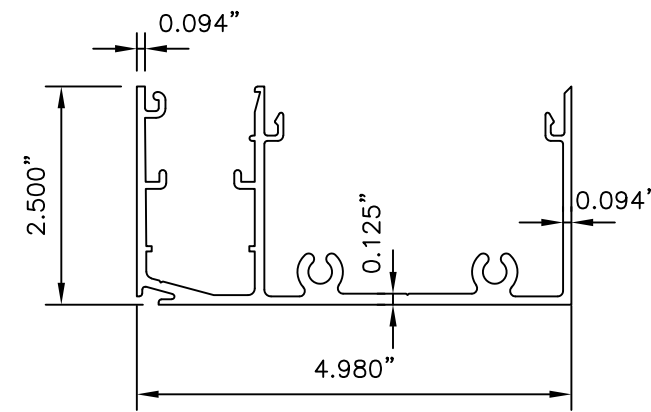
RW-5131 MULL



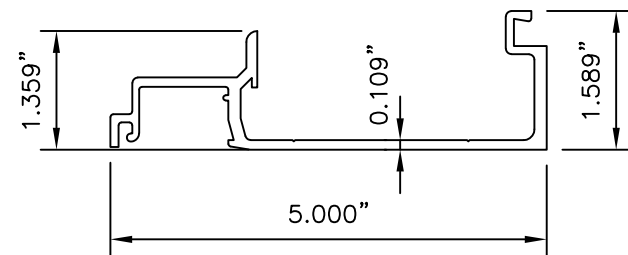
RW-5134 GLAZING BEAD



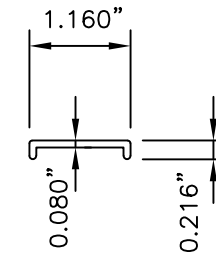
FG-5126 SPACER



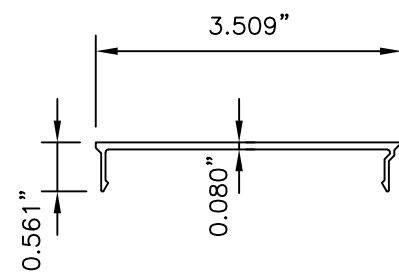
RW-5138 SILL



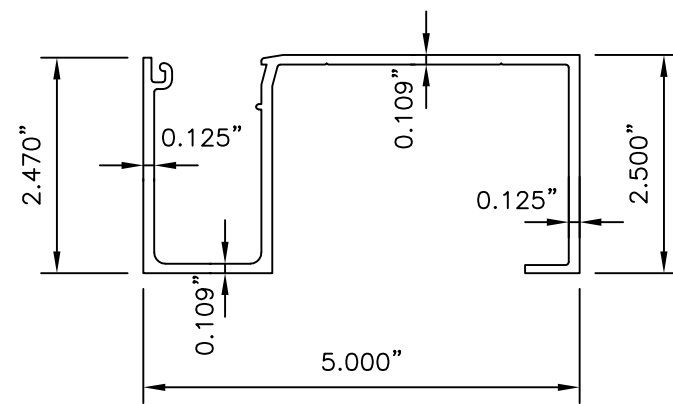
RW-5132 MULL



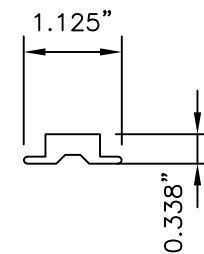
RW-5139 SETTING CHAIR  
LOCATE AT SETTING BLOCKS AND MID-LITE



RW-5140  
SILL FILLER



RW-5136 JAMB



FG-5124 EPDM SETTING BLOCK

REV	BY	DATE	DESCRIPTION
B	MS	03/09/23	8TH (2023) FBC UPDATE
A	NUS	06/04/20	2020 FBC UPDATE

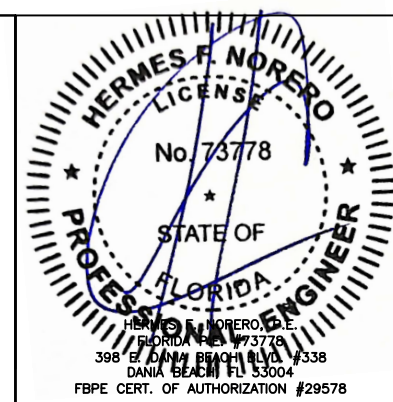
MANUAL COMP



803 AIRPORT RD. TERRELL TX 75160  
(972) 551-6100

PROJECT APPROVAL DRAWINGS  
RW-5000 RIBBON WINDOW SYSTEM

PROJECT	PROJECT NO.
DRAWN	DATE
SCALE	
DRAWING NO.	
SHEET	



SCALE NOTED

DRAWING NO. RW-5000

SHEET 7 OF 7